



---

## **TORE JOINT VENTURE BOUGAINVILLE, PAPUA NEW GUINEA**

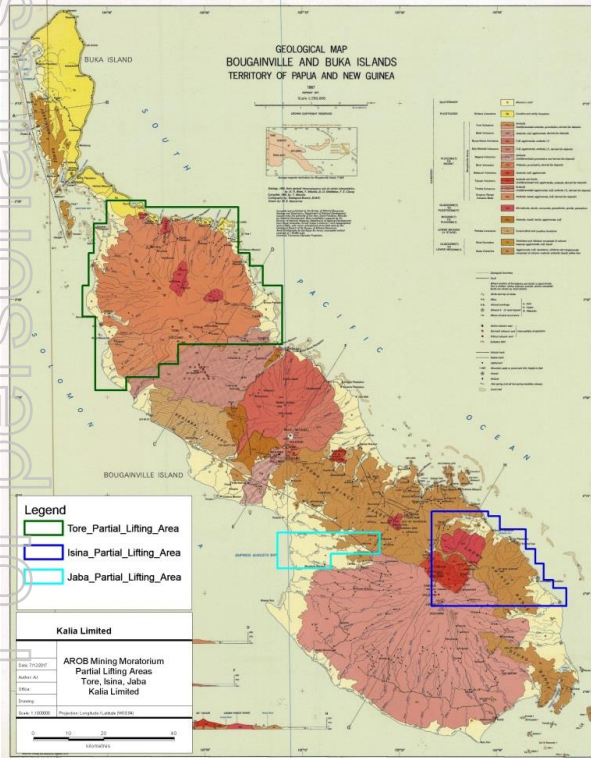
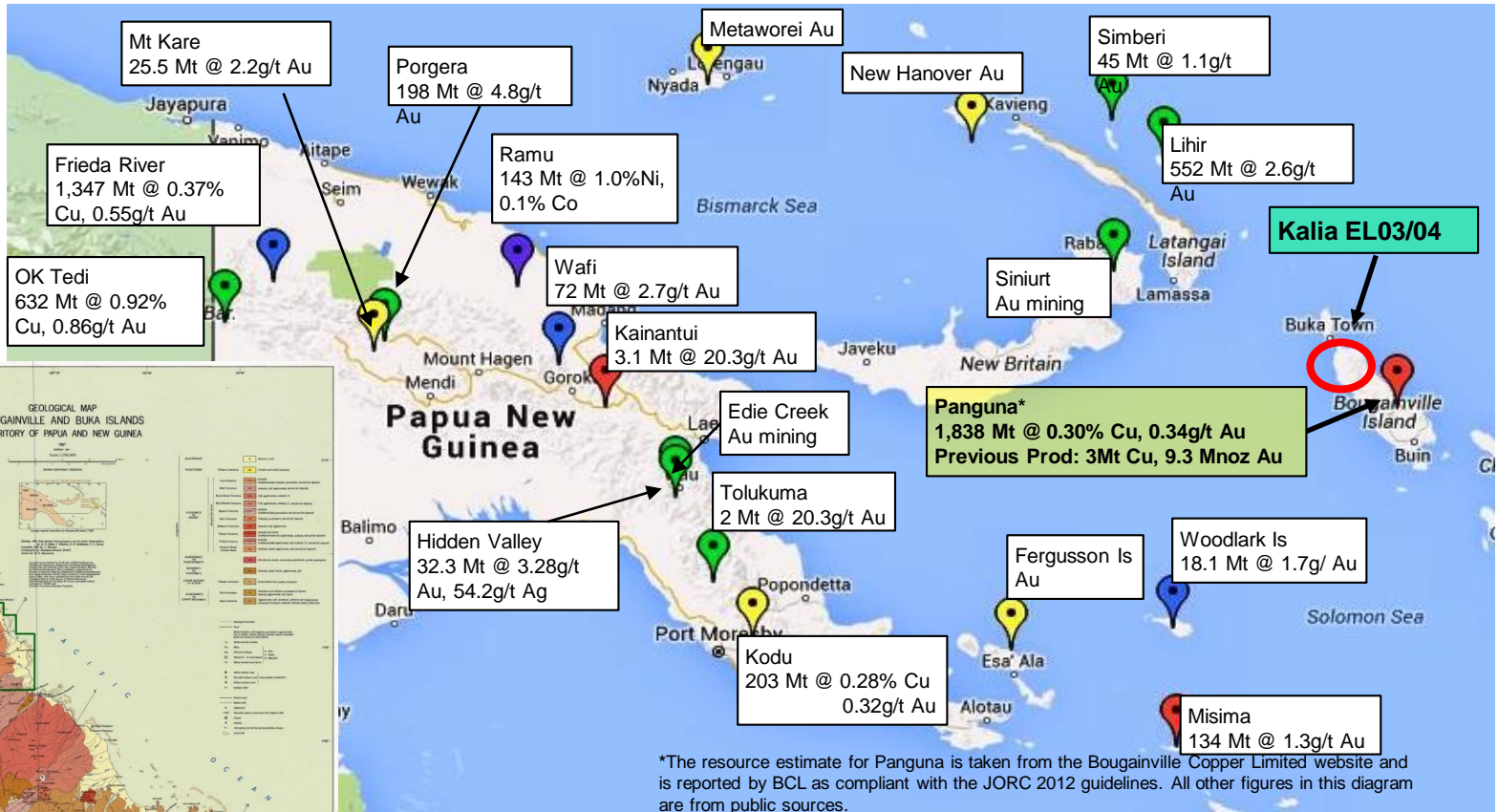
Exploring in “The Pacific Ring of Fire” for world class copper/gold porphyry systems.

# Bougainville Context

- Autonomous Government within PNG
- Supportive environment for exploration and mining
- Own Mining Act of 2015 – similar but different to PNG
- Landowners own the minerals, not the State
- Bougainville moratorium on mining since 1980's
- Kalia been active since 2016 in expectation of change
  - Landowner discussions
  - Awareness programmes
  - Relationship development with suppliers, officials, interest groups, churches
- Moratorium partially lifted for 3 specific areas in May 2017
- 4 undisputed valid licences in operation in the 3 areas – Kalia has a 75% interest in two covering 1,704 km<sup>2</sup>
- Kalia is focused on the highly prospective north of the island with very supportive landowner base

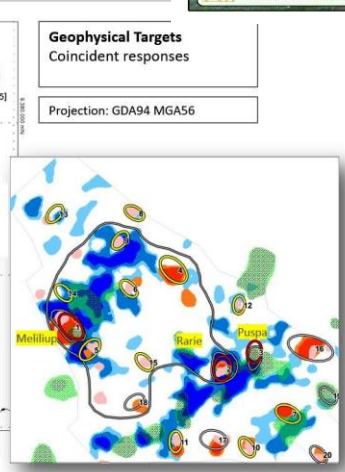
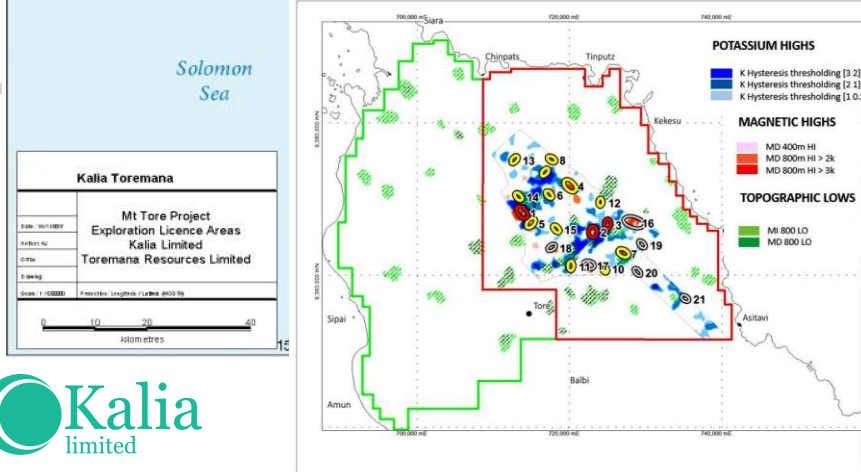
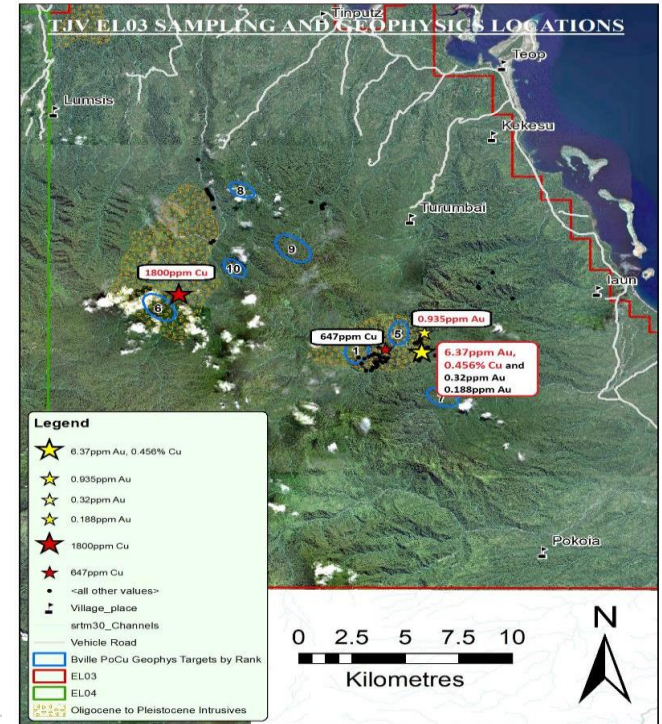
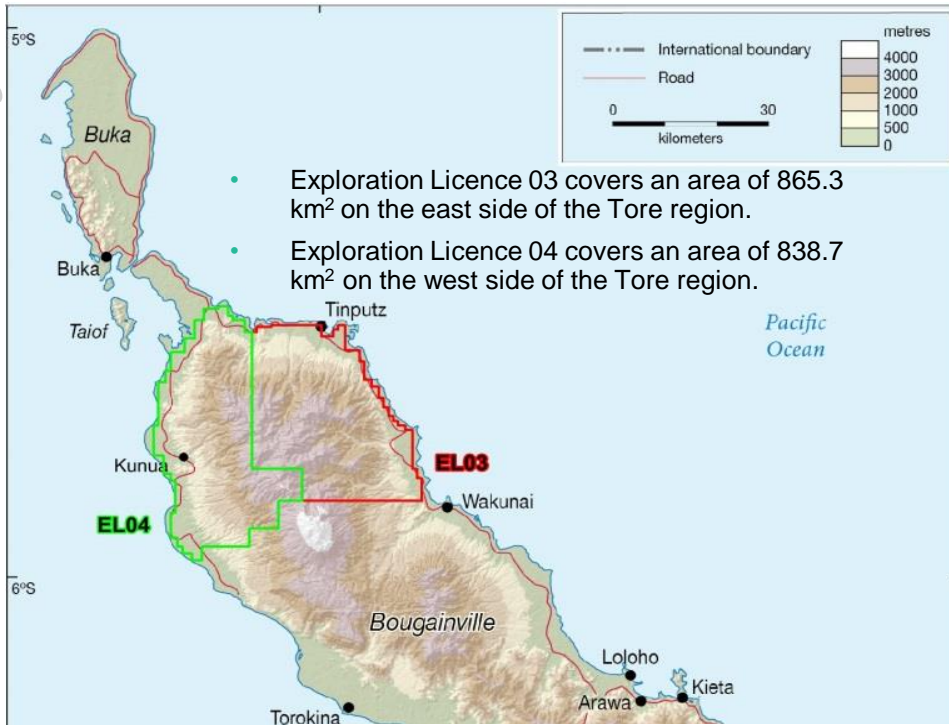
# TJV - Geology

For personal use only



# TJV - Geology

For personal use only



# Kalia's value benchmarked

- Primarily looking for porphyry copper
- Some may benchmark against Kingston (KSN:ASX); Geopacific (GPR:ASX) or perhaps Rugby Mining (RUG:TSX)
- Our view is that there are no like-for-like comparators given the size and position of the licences in this special location with 1,704 km<sup>2</sup> under two exploration licences
- Panguna is an indicator of the potential
- Looking to SolGold for our development and value curve is the most suitable

SOLG Share Performance



# Corporate Snapshot

For personal use only

## CAPITAL STRUCTURE

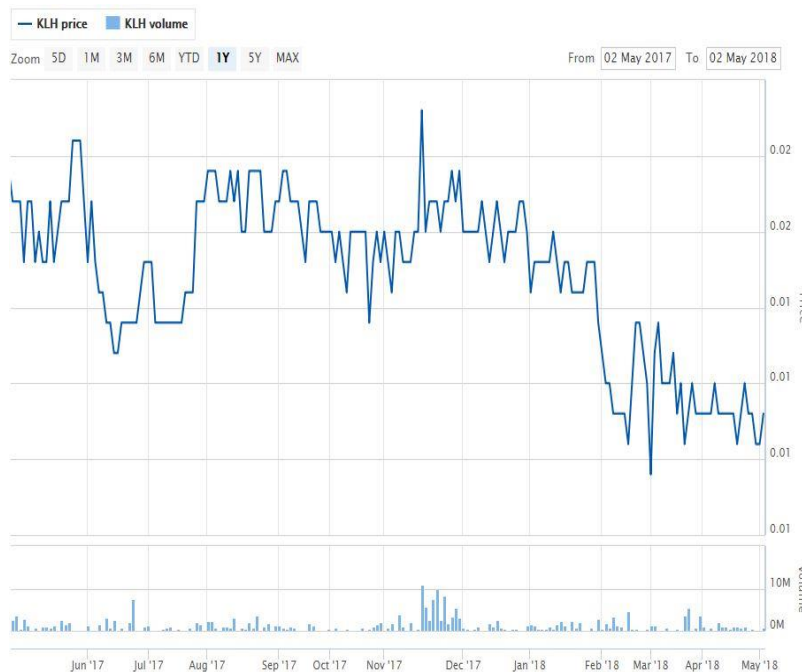
Shares on issue	2,514,347,391
Options on issue	294,500,000
Market capitalisation (@ A\$0.009 per share)	A\$22.63m
Cash on hand (30 April 2018)	A\$0.23m
Secured undrawn loan facility	A\$3.0m

## KEY PERSONNEL

Chairman	The Hon. David Johnston B.Juris LLB.
Managing Director	Terry Larkan MBA FCIS FCPA (Aust.)
Executive Director	Peter Batten BAppSc Geology MAusIMM
Comp. Secretary / CFO	Phillip Hartog BCompt. CPA (Aust.)

## TOP 20 SHAREHOLDERS (14 May 2018)

NAME	UNITS	%
GLOBAL RESOURCES INVESTMENT	535,150,000	21.28
NIKOLAJS ZUKS	225,000,000	8.95
ENZED NOMINEES PTY LTD	143,235,362	5.70
GLENEAGLE SECURITIES NOMINEES	122,905,985	4.89
J P MORGAN NOMINEES AUSTRALIA	106,923,802	4.25
KSLCORP PTY LTD	106,644,155	4.24
GREYWOOD HOLDINGS PTY LTD	62,000,000	2.47
MRS MELANIE THERESE VERHEGGEN	60,000,000	2.39
CARLA MICHELLE PTY LTD	59,796,988	2.38
PILLAGE INVESTMENTS PTY LTD	55,000,000	2.19
MAYSTAR PTY LTD	54,216,867	2.16
HSBC CUSTODY NOMINEES	48,000,000	1.91
JESSIKA ERIN PTY LTD	40,662,651	1.62
PETER BATTEN	36,144,578	1.44
SUZAN BAKER	32,412,651	1.29
LSAF HOLDINGS PTY LTD	27,904,774	1.11
FINROW LIMITED	25,000,000	0.99
IAN SANDOVER & ASSOCIATES PTY	24,900,000	0.99
AMRIC PTY LTD	24,550,000	0.98
BNP PARIBAS NOMS PTY LTD	21,000,000	0.84
	<b>1,811,447,813</b>	<b>72.04</b>



# Kalia's Proposition

- 1,704 km<sup>2</sup> under 2 exploration licences
- Panguna is an indicator of the potential
- Environmental and Social plans submitted and accepted
  - Strong community and landowner relationships
  - All social licence processes in place
- Historical geochemical and geophysical study data obtained and reworked
- Targets identified and exploration underway
- <20% aerial geophysical survey in 1989, huge upside for new and refined targets using modern technology – work to be commissioned June 2018
- \$3 million loan facility to fund activities
- Gateway to further opportunities in Bougainville